

ANTOLOGIA

JORDI BERTRAN

TECHNICAL REQUIREMENTS

Technical fact sheet II

THE SHOW

Technique: Marionettes

Audience: Adults and family

Language: Catala, Spanish, English or French

Length: 1 hour

STAGE AREA

A show for theatres with a black box room (totally black around the stage and audience areas)

It can be adapted to other types of spaces (consult with the Company).

Width	4m
Depth	3m
Height of the playing area	3m

Items:

1 raised platform Rosco de 2m x 1m, between 0,40m high.

2 small tables, 1m x 0,60m.

LIGHTING

Power: 10 kw (220 V, 16 A)

Dimmer: 12 channels each with 2 kW.

Projectors: 02 PC of 1 kW, with gel frame holders and gates.
10 profile spots of 1 kW. with gel frame holders and 03 irises
(narrow angle)

Accessories: 02 tripods/gantries 1.80 m in height.
Programmable 12-channel table.

Two electricity lines on stage (one for the black light and the other for the small table from the Company).

SOUND

1 microphone Shure 58 or similar

Mixing table.

PA and monitors, in accordance to the capacity and the size of the room (at least 2).

DRESSING ROOMS

For two people with tables, chairs, mirrors, hangers, running water and toilets.

Bottles of mineral water for two people.

SET-UP AND DISMANTLING

Set-up: 2h30

Dismantling: 45 minutes

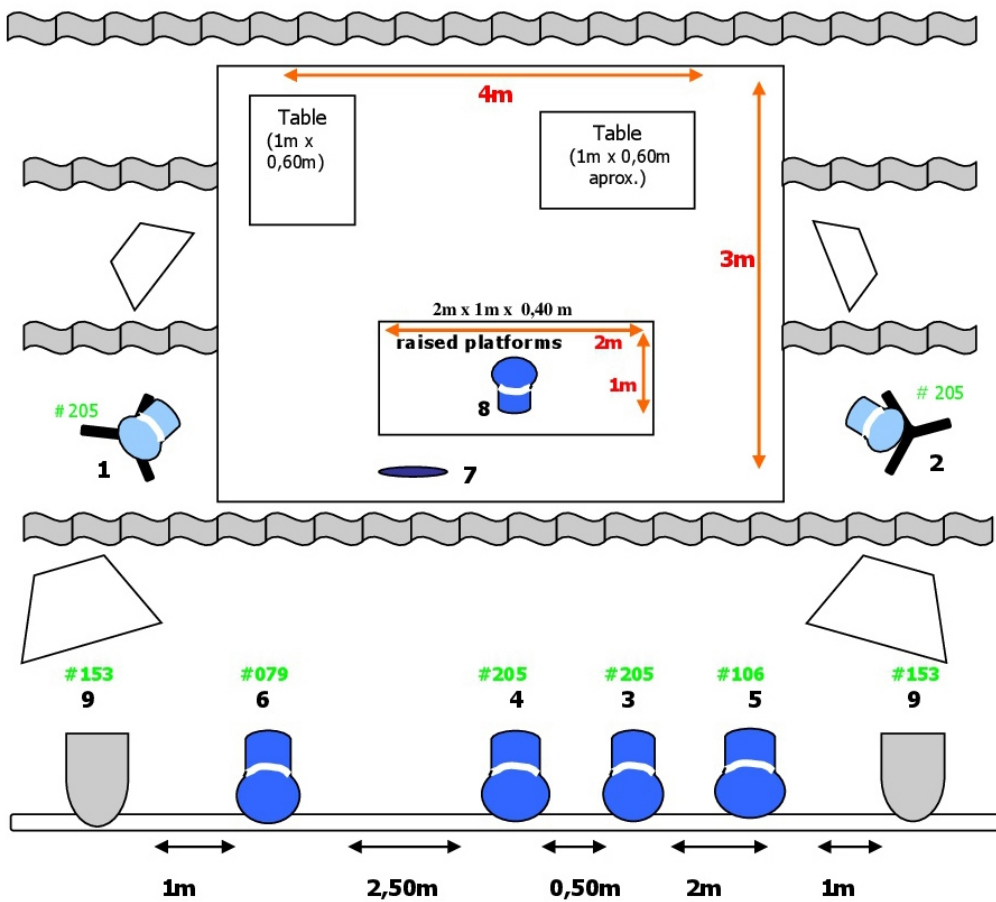
A room technician must be present while the Company uses the space and equipment (set-up, dismantling and during the performance).

OTHER REQUIREMENTS

- It is necessary that a person from the organization is present from the agreed time of arrival of the Company until their departure from the premises.
- Direct access to the company vehicle from the stage or unloading area. If this is not possible, the organization must supply the personnel for loading and unloading.
- The technical requirements of the show can be adapted as long as the Company has been informed previous to contracting the show
- The Company has the minimum equipment for the performance's sound and lighting needs, which can be arranged when the show is contracted.



1 raised platform Rosco 2m x 1m, 0,40m high.



	07 long adjustable spotlights 1000 w
	02 spotlights 1000 W PC
#	filters
	02 stands spotlights
	02 speakers
	02 monitors
	Black curtains
	Fluorescent black (property of the company)
	3 iris

CONTACT

Companyia Jordi Bertran | 607454784 | marioneta@jordibertran.cat